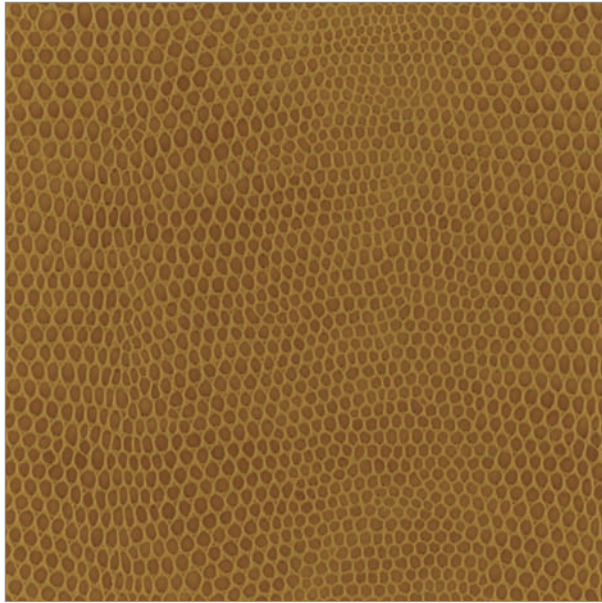


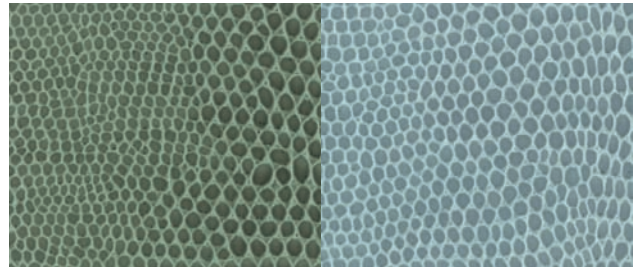
RENAISSANCE I

Snake

EXOTIC LEATHER COLLECTION

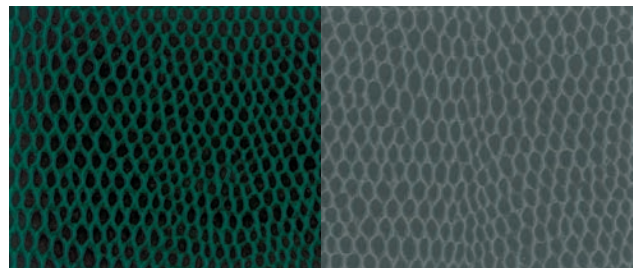


SS-314 CAMEL



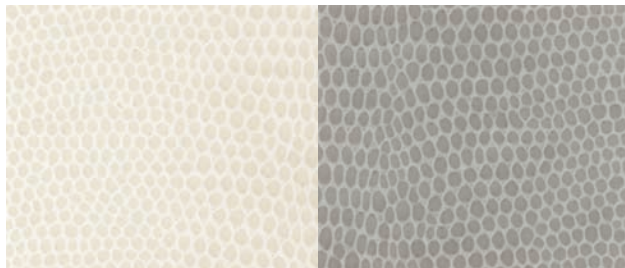
SS-341 MOSS

SS-351 PORCELAIN



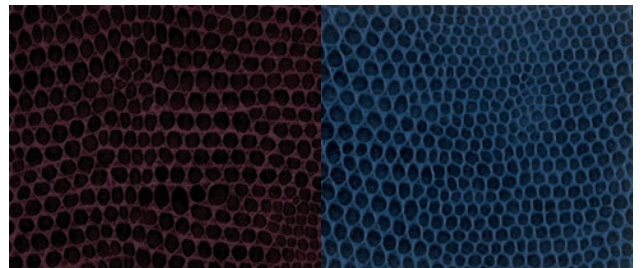
SS-340 FOREST

SS-350 SLATE



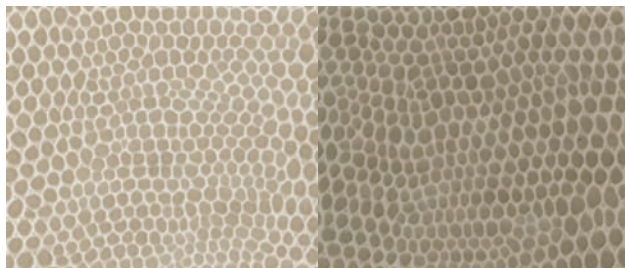
SS-300 CLOUD

SS-310 PUTTY



SS-360 BORDEAUX

SS-380 MARINE



SS-305 VANILLA

SS-315 MICA



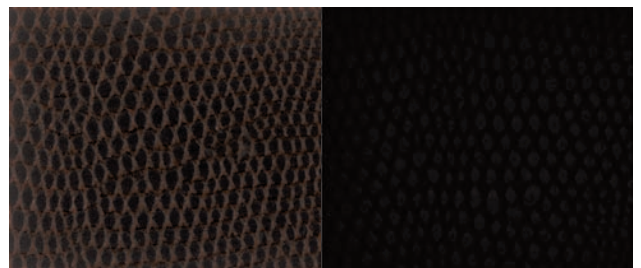
SS-371 RUST

SS-390 BLACK-MATTE



SS-321 PEACH

SS-322 ACORN



SS-370 TEAKWOOD

SS-390 EBONY-GLOSS

Printed colors shown are extremely accurate to the actual colors however please request a memo sample to ensure satisfaction.

:: SPECIFICATIONS

- . Width: 54"
- . Nominal total thickness: .036 gauge
- . Standard weight: 21 oz / linear yard
- . Content: Face: 100% polyurethane
Back: reinforced Pollex
- . Roll length: 50 yards

:: FLAMMABILITY REQUIREMENTS*

- . FMVSS-302
 - . CA Bulletin 117 Class 1
 - . UFAC - Class 1
 - . NFPA 260 - Class 1
 - . BIFMA - Class A
 - . IMO A.652(16) 8.2
- *This term and any other corresponding data refer to typical performance in the tests indicated and should not be construed to imply the behavior of this or any other material under actual fire conditions.

:: CARE & CLEANING

- . General Care: While this product is inherently stain resistant, it is important to keep it clean at all times to maintain the original look and the rich feel.
- . Stain Removal: Spot cleaning with soap and water will remove most of the everyday stains without leaving any stain or color behind. Tough, stubborn stains can be removed by a mild cleansing fluid followed by clean water rinse.

:: NATURE FRIENDLY, NATURALLY SOFT

- . Nature friendly, PVC free product
- . Contains no volatile compounds which are found in most vinyl-based products.
- . Supple leather touch with exceptional strength and performance.
- . Controlled 4-way stretch for excellent tailorability.

:: GENERAL CHARACTERISTICS

- . Superior wear resistance (ASTM D3597 Wyzenbeek) Exceeds 100,000 double rubs by wire screen
- . Colorfastness to light (AATCC-16/400 hours)
- . Colorfastness to crocking (AATCC-8/passes)
- . Colorfastness to chlorine bleach (AATCC-3) passes 1:10 & 1:5 bleach dilution test
- . Excellent breaking strength (ASTM D5034)
- . Excellent tear strength (ASTM D2262)
- . Cold crack resistant
- . Mildew resistant

:: SUITABLE APPLICATIONS

- . Contract interiors
- . Office
- . Restaurant
- . Hospitality
- . Healthcare
- . RV / Marine interiors



FLOCK TEX, Inc.
200 Founders Dr.
Woonsocket, RI 02895
Tel: 401.765.2340
Fax: 401.765.4915
Toll Free: 800.556.7286
www.flocktex.com