



## RENAISSANCE I

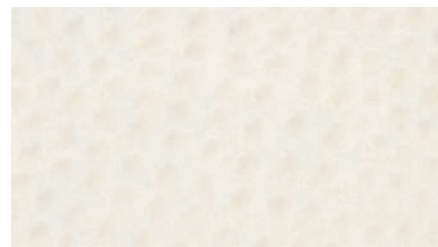
nature friendly, naturally soft

### Revolution in Faux Leather Luxury

- Ultrasoft leather feel, yet exceptionally strong.
- Polyurethane-based product with reinforced Pollex back.
- Revolutionary process to achieve superior performance for tough creative challenges.



SO-321 FAWN



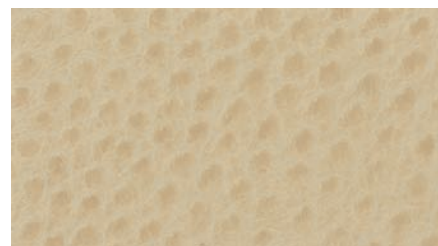
SO-301 WHITE



SO-312 BUFF



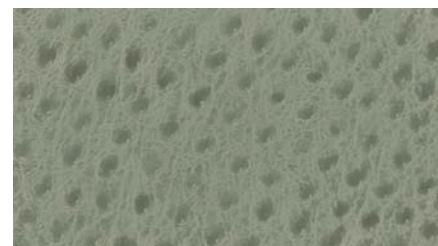
SO-303 ALMOND



SO-311 BISQUE



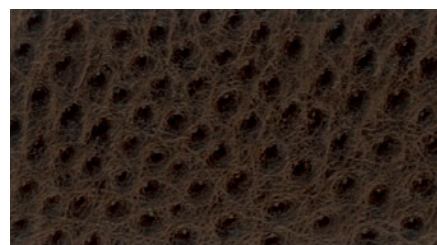
SO-313 BIRCH



SO-323 MUSHROOM



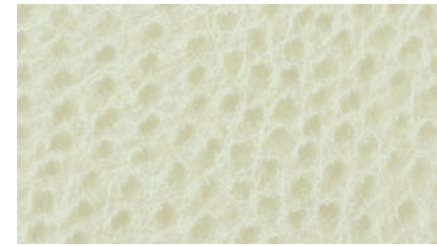
SO-314 BAMBOO



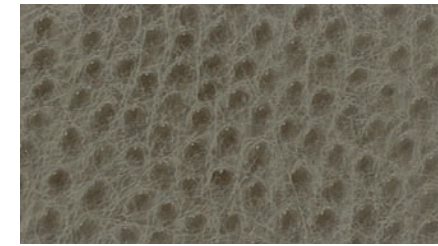
SO-372 MAHOGANY



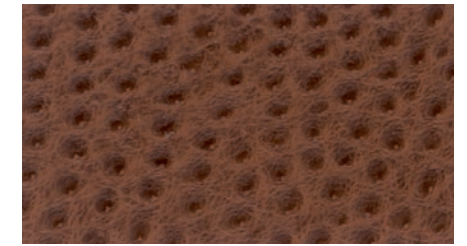
SO-373 CHOCOLATE



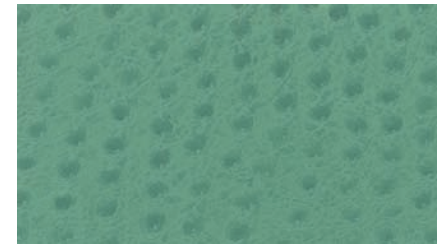
SO-302 IVORY



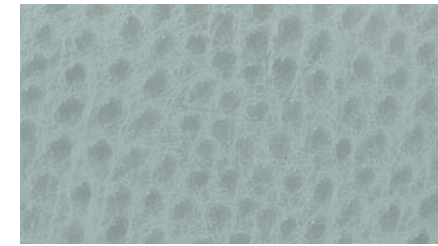
SO-322 LATTE



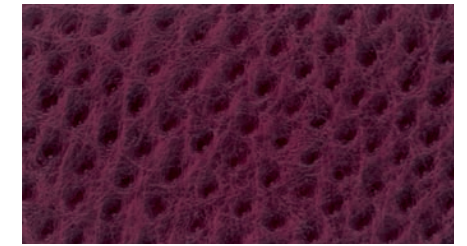
SO-371 RUST



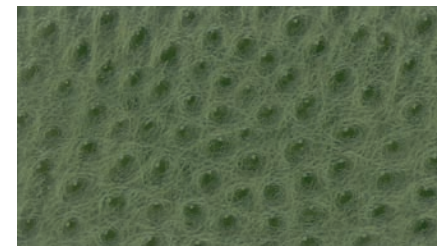
SO-341 NEW TEAL



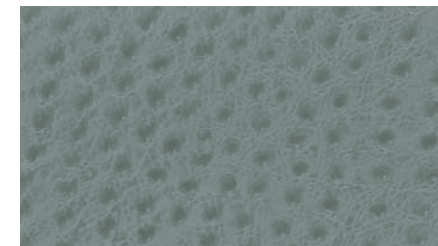
SO-351 PORCELAIN



SO-361 NEW BERRY



SO-342 MEADOW



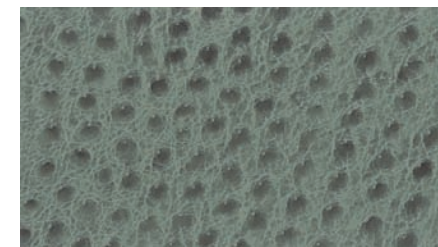
SO-353 ASH



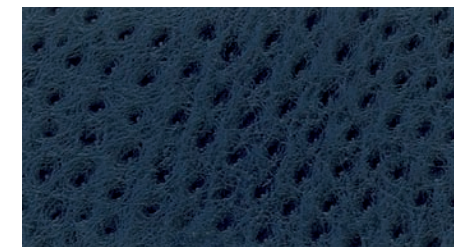
SO-362 MERLOT



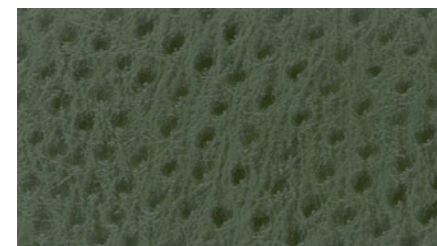
SO-343 MYSTIC



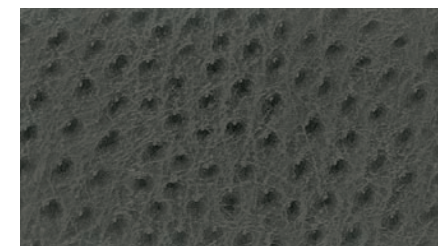
SO-331 MOSS



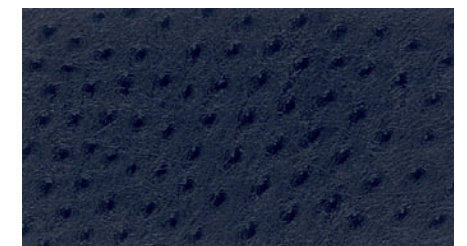
SO-382 ROYAL BLUE



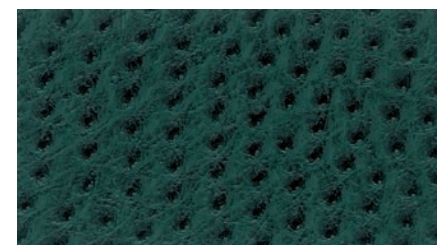
SO-332 DK. GREEN



SO-352 CHARCOAL



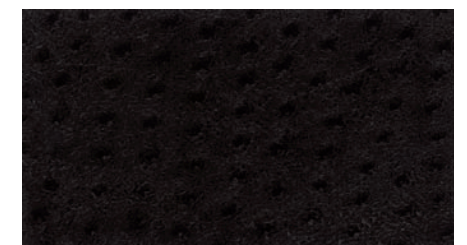
SO-381 ADMIRAL



SO-344 ORCHARD



SO-391 SOFT BLACK



SO-392 ONYX

Printed colors shown are extremely accurate to the actual colors however please request a memo sample to ensure satisfaction.



*Ostrich™*

RENAISSANCE I

nature friendly, naturally soft

RENAISSANCE I

Revolution in Faux Leather Luxury

*Ostrich™*

**Specifications**

Width: 54"

Content: Face 100% polyurethane  
Back 100% reinforced Pollex

Put-up: 50 Yard Roll

Weight: app. 14 oz. per square yard

Characteristics	Meets or Exceeds
Abrasion: Exceeds 100,000 double rubs	ASTM D 3597 Wyzenbeek (wire screen abradant)
Flammability Requirements*	FMVSS 302 CA Bulletin 117 Class 1 UFAC - Class 1 NFPA 260 - Class 1 (Can be treated to meet FAR specifications)
Tensile Strength	ASTM D 5034
Tear Strength	ASTM D 2261
Yarn Slippage	ASTM D 4034
Color Fastness - Crocking Light	AATCC 8 AATCC 16

**Care & Cleaning**

General Care: While this product is inherently stain resistant, it is important to keep it clean at all times to maintain the original look and rich feel.

Stain Removal: Spot clean with mild soap and water. For stubborn stains, use mild solvent. Rinse the cleaned area with clean water and dry with air or lint-free cloth.

\*This term and any other corresponding data refer to typical performance in the tests indicated and should not be construed to imply the behavior of this or any other material under actual fire conditions.



FLOCK TEX, Inc.  
200 Founders Dr.  
Woonsocket, RI 02895

Tel: 401.765.2340  
Fax: 401.765.4915  
Toll Free: 800.556.7286

[www.flocktex.com](http://www.flocktex.com)