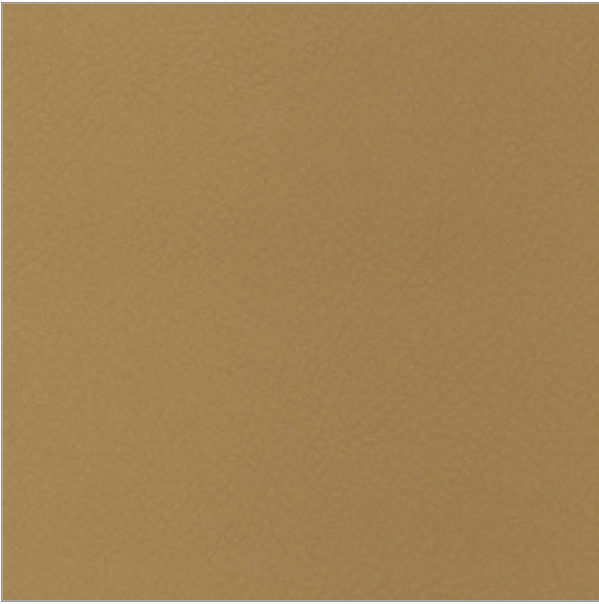


AFFINITY

RENAISSANCE IV



AF-215 SAND



AF-261 SILVER GRAY



AF-211 SNOW WHITE



AF-232 DUNE



AF-PERSIMMON



AF-221 IVORY



AF-212 ALMOND



AF-262 LT. GRAPHITE



AF-231 VANILLA



AF-215 SAND



AF-251 TORCH RED



AF-214 BISQUE



AF-241 CHAMPAGNE



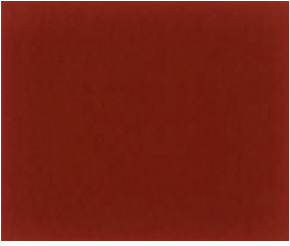
AF-263 MED. GRAY



AF-213 CAPPUCCIANO



AF-233 ITALIAN TAN



AF-253 PAPRIKA



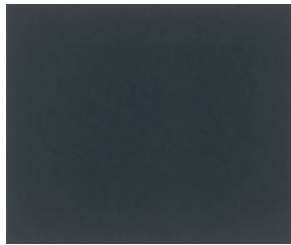
AF-224 MED. CAMEL



AF-240 CELERY



AF-281 IMPERIAL



AF-291 PEWTER



AF-266 MED. FLINT



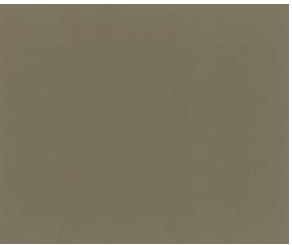
AF-222 SHALE



AF-216 BEECHWOOD



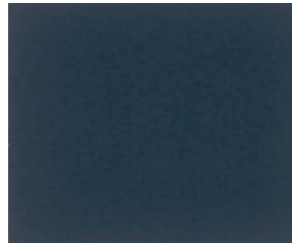
AF-255 CARMINE



AF-225 PRAIRIE TAN



AF-242 OLIVE



AF-282 DK. DENIM



AF-292 MATTE BLACK



AF-265 MIST GRAY



AF- MED. LT. STONE



AF-235 TERRA COTTA



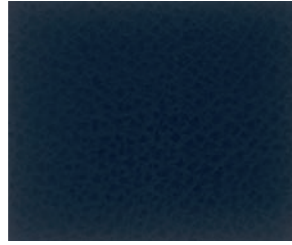
AF-252 DK. RED



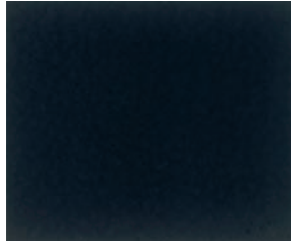
AF-227 MED. NEUTRAL



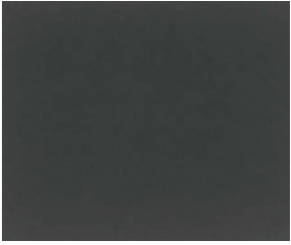
AF-243 SAGE



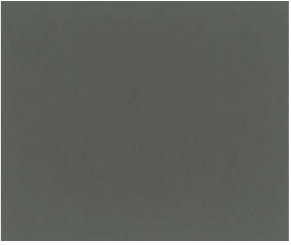
AF-283 NAVY



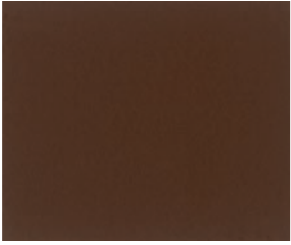
AF-293 BLACK



AF-268 CHARCOAL



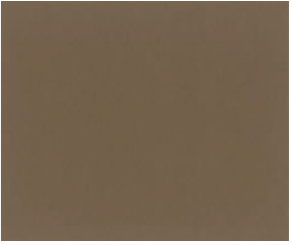
AF-228 TAUPE



AF-236 CHESTNUT



AF-254 BORDEAUX



AF-220 BARK



AF-245 PINE GREEN

Printed colors shown are extremely accurate to the actual colors however please request a memo sample to ensure satisfaction.



nature friendly, naturally soft

RENAISSANCE IV

:: SPECIFICATIONS

- . Width: 54"
- . Nominal total thickness: 0.46 gauge
- . Nominal weight: 34 oz / linear yard
- . Content: Face: poly vinyl with proprietary top coating
Back: 100% polyester double knit
- . Roll length: 30 yards

:: FLAMMABILITY REQUIREMENTS*

- . NFPA 701 Small Scale Test
- . IMO A.652(16) 8.2 & 8.3
- . Port Authority of New York/New Jersey
- . Boston Fire Dept. Code IX-1
- . FMVSS-302
- . California Flammability Regulation (Bulletin 117, Section E)
- . BIFMA Class A
- . UFAC-Class 1
- . May comply with California Tech Bulletin 133, when tested with suitable component materials.

:: CARE & CLEANING

- . General Care: While this product is inherently stain resistant, it is important to keep it clean at all times to maintain the original look and the rich feel.
- . Stain Removal: Spot cleaning with soap and water. Rinse the cleaned area with clean water and dry with air or lint-free cloth. **DO NOT USE ALCOHOL BASED CLEANERS**
- . Disinfectability: This product is formulated to achieve a superior level of disinfectability with a 10:1 bleach solution.

AFFINITY

:: GENERAL CHARACTERISTICS

- . Authentic leather touch
- . Superior wear resistance
Exceeds 100,000 double rubs by wire screen
*ASTM D3597 Wyzenbeek
- . Anti-Bacterial/Anti-Microbial treatments (AATCC 147)
- . -20°F cold crack resistant (Fed. Standard 191 A)
- . Colorfastness to light (AATCC 16-2004)
passes 400 hours
- . Colorfastness to chlorine bleach (AATCC-3)
passes 1:10 & 1:5 bleach dilution
- . Mildew resistant (ASTM G21 / AATCC 6275)
- . Oil resistant (AATCC 130-2000)
- . Anti-static finish
- . Sulfide stain resistant

:: SUITABLE APPLICATIONS

- . Automotive Seating & Trim
- . RV / Marine Interiors
- . Contract interiors
- . Restaurant
- . Hospitality
- . Healthcare
- . Office

*This term and any other corresponding data refer to typical performance in the tests indicated and should not be construed to imply the behavior of this or any other material under actual fire conditions.



FLOCK TEX, Inc.
200 Founders Dr.
Woonsocket, RI 02895
Tel: 401.765.2340
Fax: 401.765.4915
Toll Free: 800.556.7286
www.flocktex.com