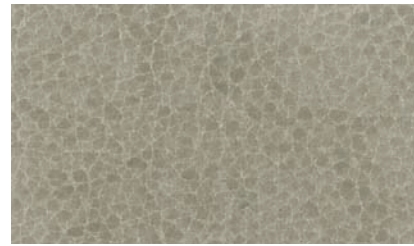
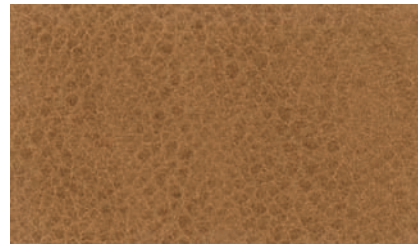




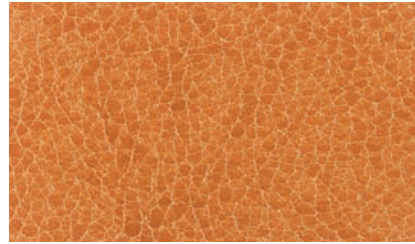
*IM-523 DESSERT



IM-520 BISQUE



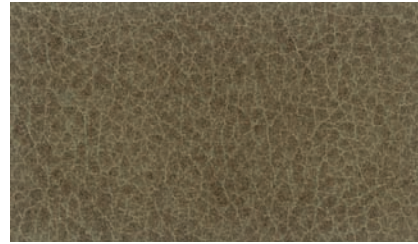
IM-522 DUNE



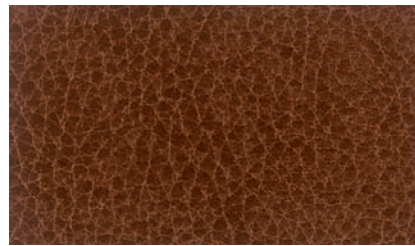
*IM-524 ORANGE



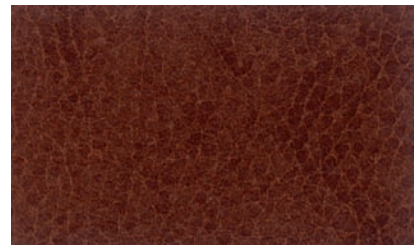
IM-521 BUFF



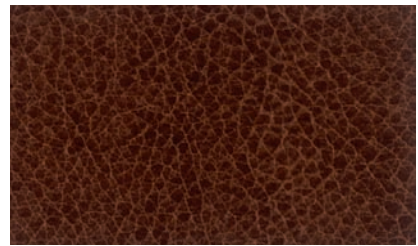
IM-533 MOCHA



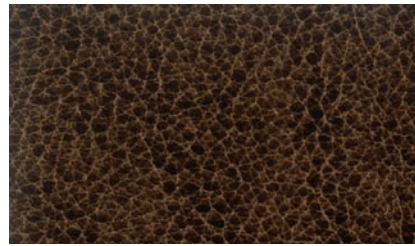
IM-531 ACORN



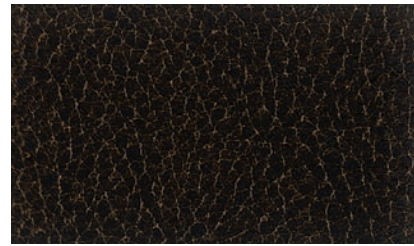
*IM-535 CANYON



IM-532 RUST



IM-534 EXPRESSO



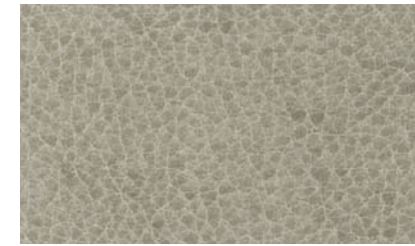
*IM-536 TRUFFLE



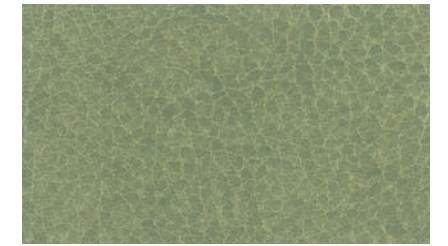
IM-562 AUBERGINE



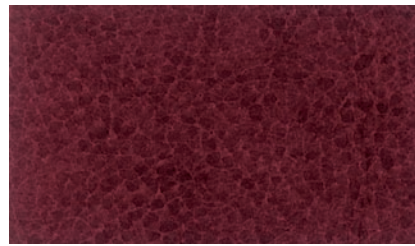
*IM-511 CREAM



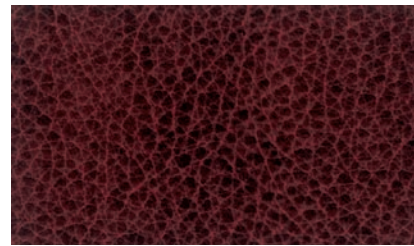
IM-540 CHAMPAGNE



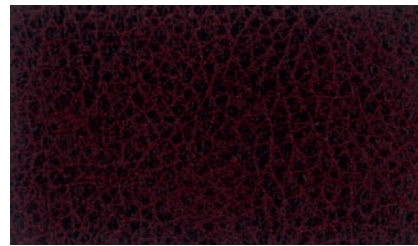
*IM-544 SPRING



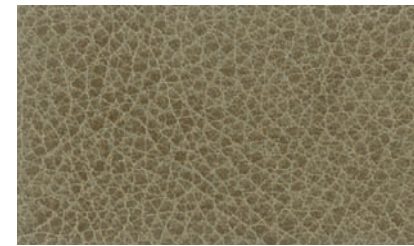
*IM-563 RED BERRY



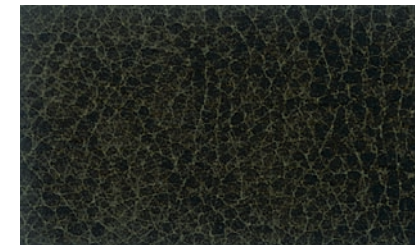
IM-560 CLARET



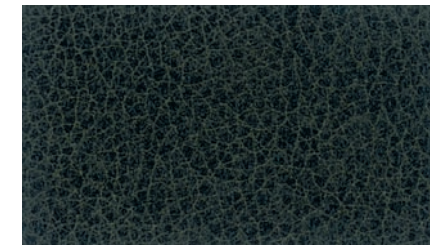
IM-561 MERLOT



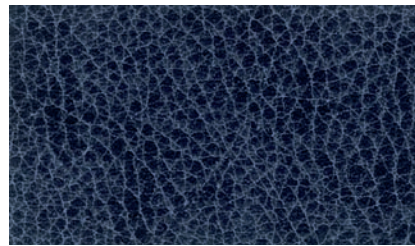
IM-542 OLIVE



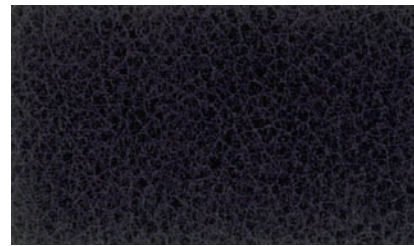
IM-541 CELERY



IM-543 FOREST



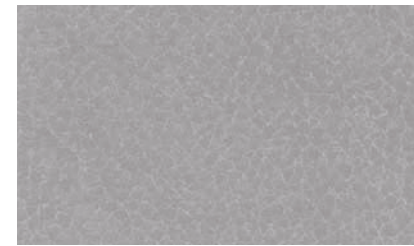
IM-580 COLBALT



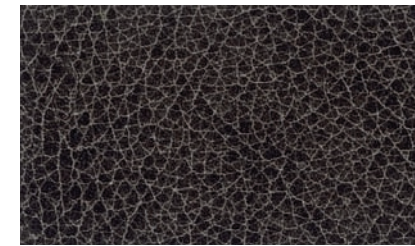
IM-581 NEWPORT



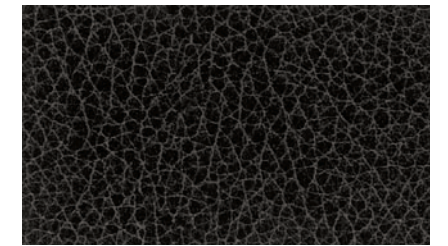
IM-591 EBONY



*IM-570 SILVER GRAY



IM-571 ASH



IM-572 PEWTER

MAYA
RENAISSANCE II
 nature friendly, naturally soft



IM-534 ESPRESSO

Printed colors shown are extremely accurate to the actual colors however please request a memo sample to ensure satisfaction.



MAYA

RENAISSANCE II

nature friendly, naturally soft

RENAISSANCE II

nature friendly, naturally soft

:: SPECIFICATIONS

- . Width : 54"
- . Nominal total thickness: 0.044 gauge
Standard weight: 17 oz / linear yard
- . Content: Face: 100% polyurethane
Back: 100% polyester
- . Roll Roll Length: 40 yards

:: FLAMMABILITY REQUIREMENTS*

- . CA Bulletin 117 Class 1
- . UFAC - Class 1
- . NFPA 260 - Class 1

*This term and any other corresponding data refer to typical performance in the tests indicated and should not be construed to imply the behavior of this or any other material under actual fire conditions.

:: CARE & CLEANING

- . General Care: While this product is inherently stain resistant, it is important to keep it clean at all times to maintain the original look and the rich feel.
- . Cleanability: W

MAYA

:: NATURE FRIENDLY, NATURALLY SOFT

- . Innovative non-PVC product
- . Contains no volatile compounds which are found in most vinyl-based products.
- . Uses environmentally friendly raw materials during its birth and emits no toxic gas when burned or buried after use.

:: GENERAL CHARACTERISTICS

- . Superior wear resistance
Exceeds 100,000 double rubs by wire screen
*ASTM D3597 Wyzenbeek
- . Naturally breathable faux leather
- . Innovative self-healing surface
- . Exquisitely soft & subtle, yet exceptionally strong

:: SUITABLE APPLICATIONS

- . Contract interiors
- . Office
- . Restaurant
- . Hospitality
- . Healthcare
- . RV/Marine Interiors



FLOCK TEX, Inc.
200 Founders Dr.
Woonsocket, RI 02895
Tel: 401.765.2340
Fax: 401.765.4915
Toll Free: 800.556.7286
www.flocktex.com