

Original

RENAISSANCE II

nature friendly, naturally soft



*IN-755 LEAF



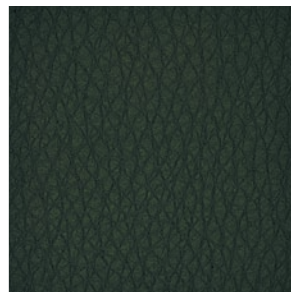
IN-751 PEBBLE



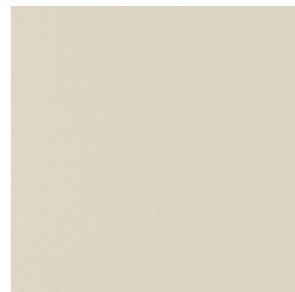
IN-752 SLATE



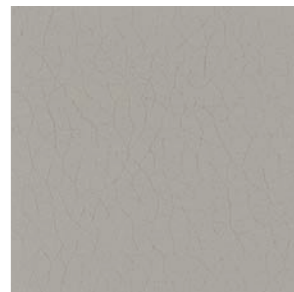
IN-754 FOREST



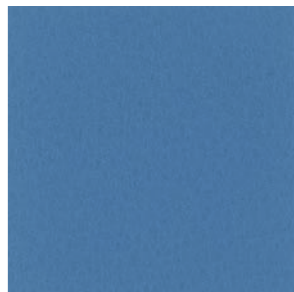
IN-753 PAISLEY



IN-711 CHAMPAGNE



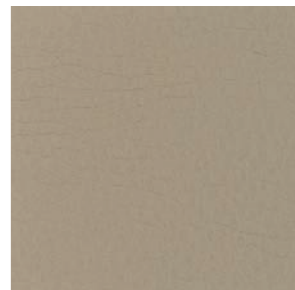
*IN-781 STONE



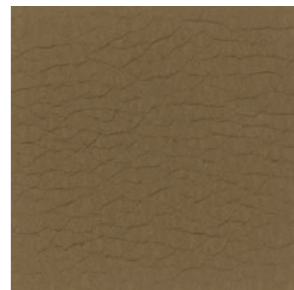
IN-771 AZURE



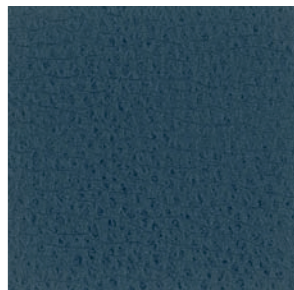
*IN-774 MARINE



IN-713 OYSTER



*IN-782 BARK



IN-772 INDIGO



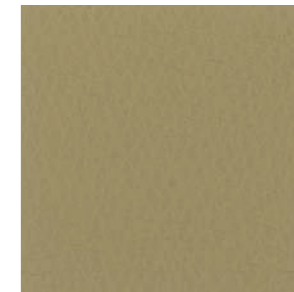
IN-773 ADMIRAL



*IN-715 ALMOND



IN-712 BUTTERMILK



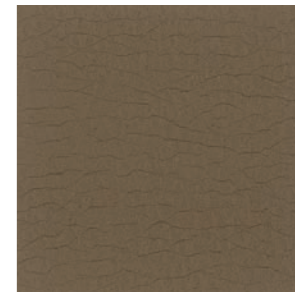
IN-723 CHAMOIS



IN-722 OATS



*IN-725 SADDLE



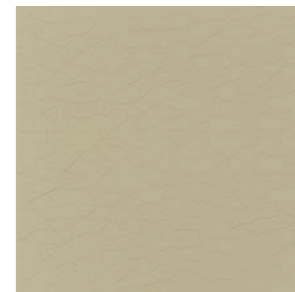
IN-714 MOCHA



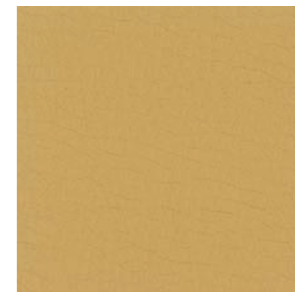
IN-724 CANYON



*IN-726 ESPRESSO



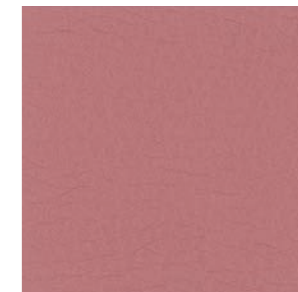
*IN-716 BUFF



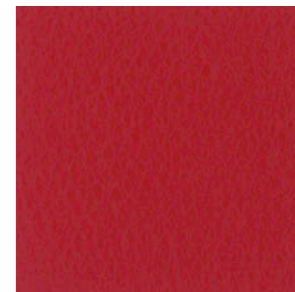
IN-721 DESSERT



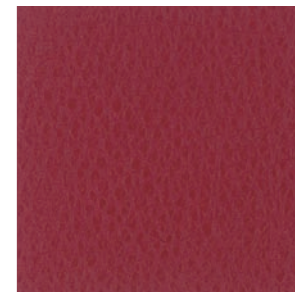
IN-731 PEACH



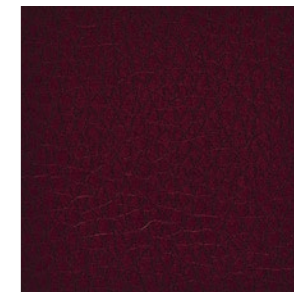
IN-732 TEA ROSE



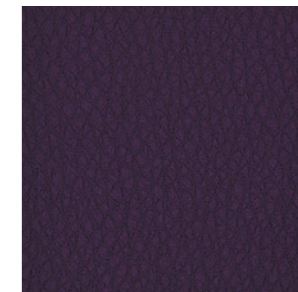
IN-741 SALSA



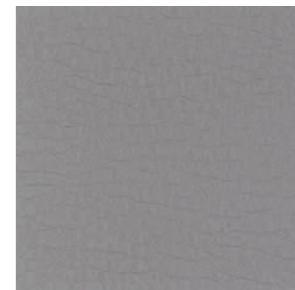
IN-742 CLARET



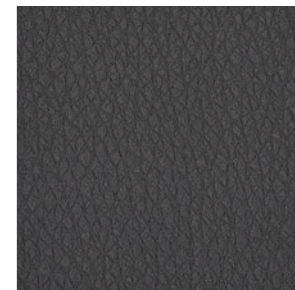
IN-743 PLUM



IN-733 AUBERGINE



IN-761 PEARL GRAY



IN-762 PEWTER



IN-763 GRAPHITE



IN-791 BLACK

Printed colors shown are extremely accurate to the actual colors however please request a memo sample to ensure satisfaction.



Original

RENAISSANCE II

nature friendly, naturally soft

RENAISSANCE II

nature friendly, naturally soft

Original

:: SPECIFICATIONS

- . Width : 54'
- . Nominal total thickness : .048 gauge
- . Standard weight : 14 oz / square yard
- . Content : Face: 100% polyurethane
Back: polyester/cotton blend
- . Roll length : 40 yards

:: FLAMMABILITY REQUIREMENTS*

- . FMVSS-302
- . CA Bulletin 117 Class 1
- . UFAC-Class 1
- . Can be treated to meet FAR Specifications
- *This term and any other corresponding data refer to typical performance in the tests indicated and should not be construed to imply the behavior of this or any other material under actual fire conditions.

:: CARE & CLEANING

- . General Care: While this product is inherently stain resistant, it is important to keep it clean at all times to maintain the original look and the rich feel.
- . Stain Removal: Spot cleaning with soap and water will remove most of the everyday stains without leaving any stain or color behind. Tough, stubborn stains can be removed by a mild cleansing fluid followed by clean water rinse.

:: NATURE FRIENDLY, NATURALLY SOFT

- . Innovative non-PVC product
- . Contains no volatile compounds which are found in most vinyl-based products.
- . Uses environmentally friendly raw materials during its birth and emits no toxic gas when burned or buried after use.

:: GENERAL CHARACTERISTICS

- . Superior wear resistance
- . Exceeds 100,000 double rubs by wire screen
- *ASTM D3597 Wyzenbeek
- . Anti-Bacterial/Anti-Microbial treatments (AATCC 147)
- . -20°F cold crack resistant (Fed. Standard 191 A)
- . Oil resistant (AATCC 130-2000)
- . Sulfide stain resistant
- . Ultraviolet resistant
- . Anti-static finish

:: SUITABLE APPLICATIONS

- . Contract interiors
- . Office
- . Restaurant
- . Hospitality
- . Healthcare
- . RV/Marine interiors



FLOCK TEX, Inc.
200 Founders Dr.
Woonsocket, RI 02895
Tel: 401.765.2340
Fax: 401.765.4915
Toll Free: 800.556.7286
www.flocktex.com