

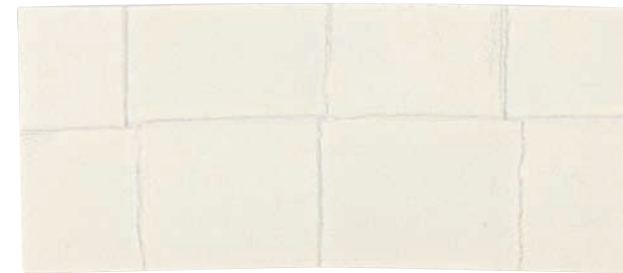
COCOA

RENAISSANCE IV

nature friendly, naturally soft

*Colonial*TM
AUTHENTIC FAUX WOVEN

INNOVATIVE PRODUCTS FOR CREATIVE PEOPLE



WHITE



SAND



PEANUT



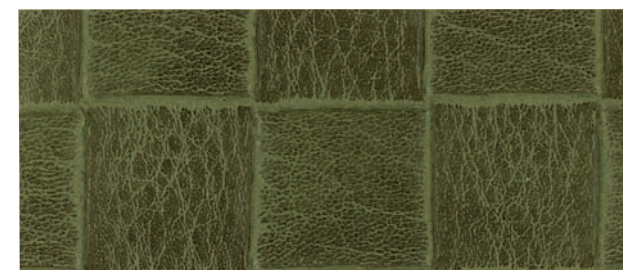
CHESTNUT



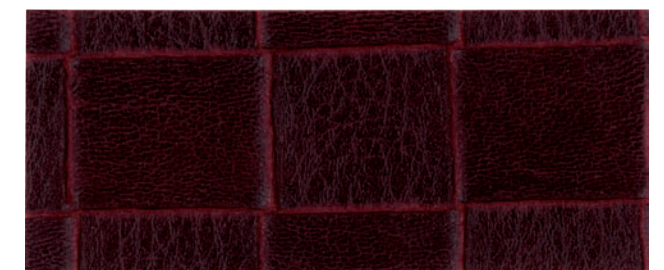
BRANDY



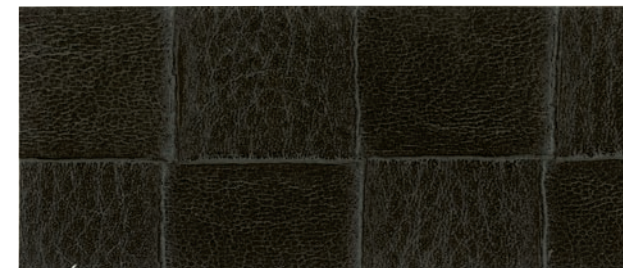
JAVA



BASIL



RED MAPLE



ASH



BLACK

Printed colors shown are extremely accurate to the actual colors however please request a memo sample to ensure satisfaction.



INNOVATIVE PRODUCTS FOR CREATIVE PEOPLE

*Colonial*TM

RENAISSANCE IV

nature friendly, naturally soft

RENAISSANCE IV

nature friendly, naturally soft

*Colonial*TM

Specifications

Width: 54"

Content: Face poly vinyl with proprietary top coating
Back 65% polyester, 35% cotton

Put-up: 40 Yard Roll

Thickness: 44/48 gauge

Characteristics

- Heavy Duty Wear Resistance
Exceeds 39,000 double rubs
*ASTM D3597 Wyzenbeek
- Ultrasoft Leather Feel
- Innovative Patterns
- Mildew Resistant
- Cold Crack Resistant

Flammability Requirements*

- Motor Vehicle Safety Standard - 302
- California Tech Bulletin 117 - Class 1
- UFAC - Class 1 Rating
- NFPA 260 - Class 1

Care & Cleaning

General Care: While this product is inherently stain resistant, it is important to keep it clean at all times to maintain the original look and rich feel.

Stain Removal: Spot clean with mild soap and water. Rinse the cleaned area with clean water and dry with air or lint-free cloth. **DO NOT USE ALCOHOL BASED CLEANERS.**

*This term and any other corresponding data refer to typical performance in the tests indicated and should not be construed to imply the behavior of this or any other material under actual fire conditions.



FLOCK TEX, Inc.
200 Founders Dr.
Woonsocket, RI 02895
Tel: 401.765.2340
Fax: 401.765.4915
Toll Free: 800.556.7286
www.flocktex.com